

# Industrial Camera Manufacturer

WWW.MINDVISION.COM.CN



# MindVision

TECHNOLOGY

## MV-GE500C

Products  
manual



### CHARACTERISTIC

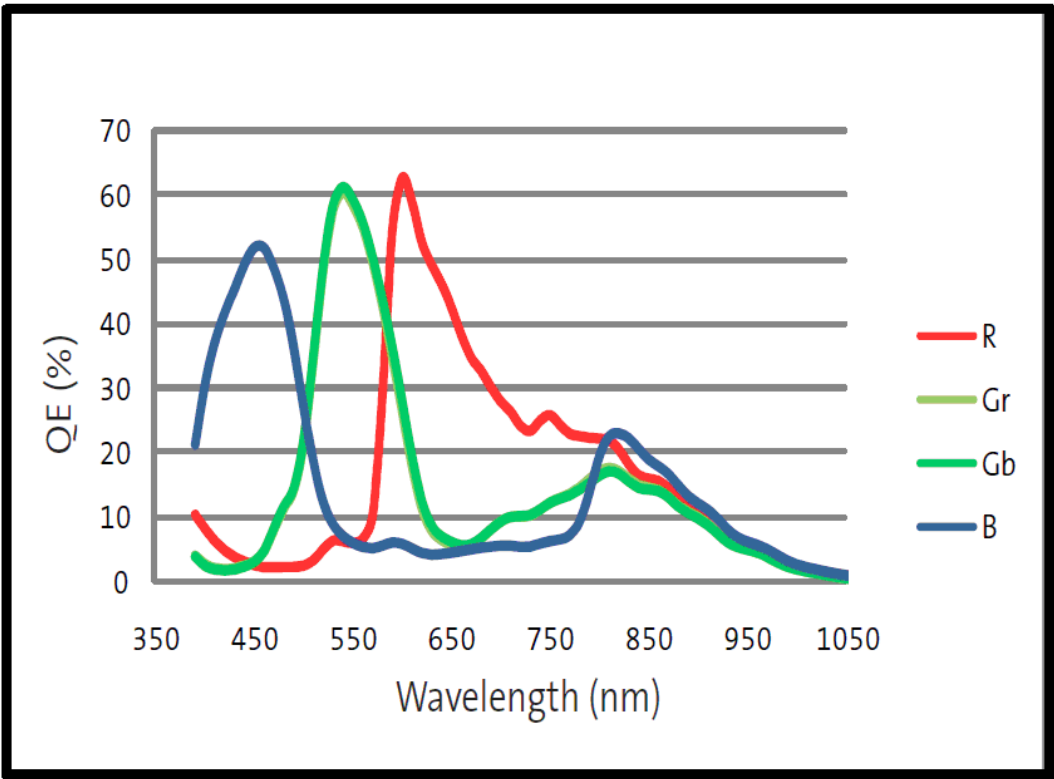
- 100 meters distance stable transmission, supports POE power supply
- Compatible with VISION standards, the free drive directly supports software such as Halcon and VisionPro
- Support external trigger and flash sync, up to 7 GPIO, all optoelectronic isolation
- The built-in image processing hardware acceleration, reduce the host CPU occupancy rate
- The special packet retransmission technology, to ensure reliable data transmission
- Excellent SDK ,like USB, cameras, plug and play
- Support multi camera work at the same time, the network can be arbitrary

**SHENZHEN MINDVISION TECHNOLOGY CO., LTD.**

## MV-GE500C

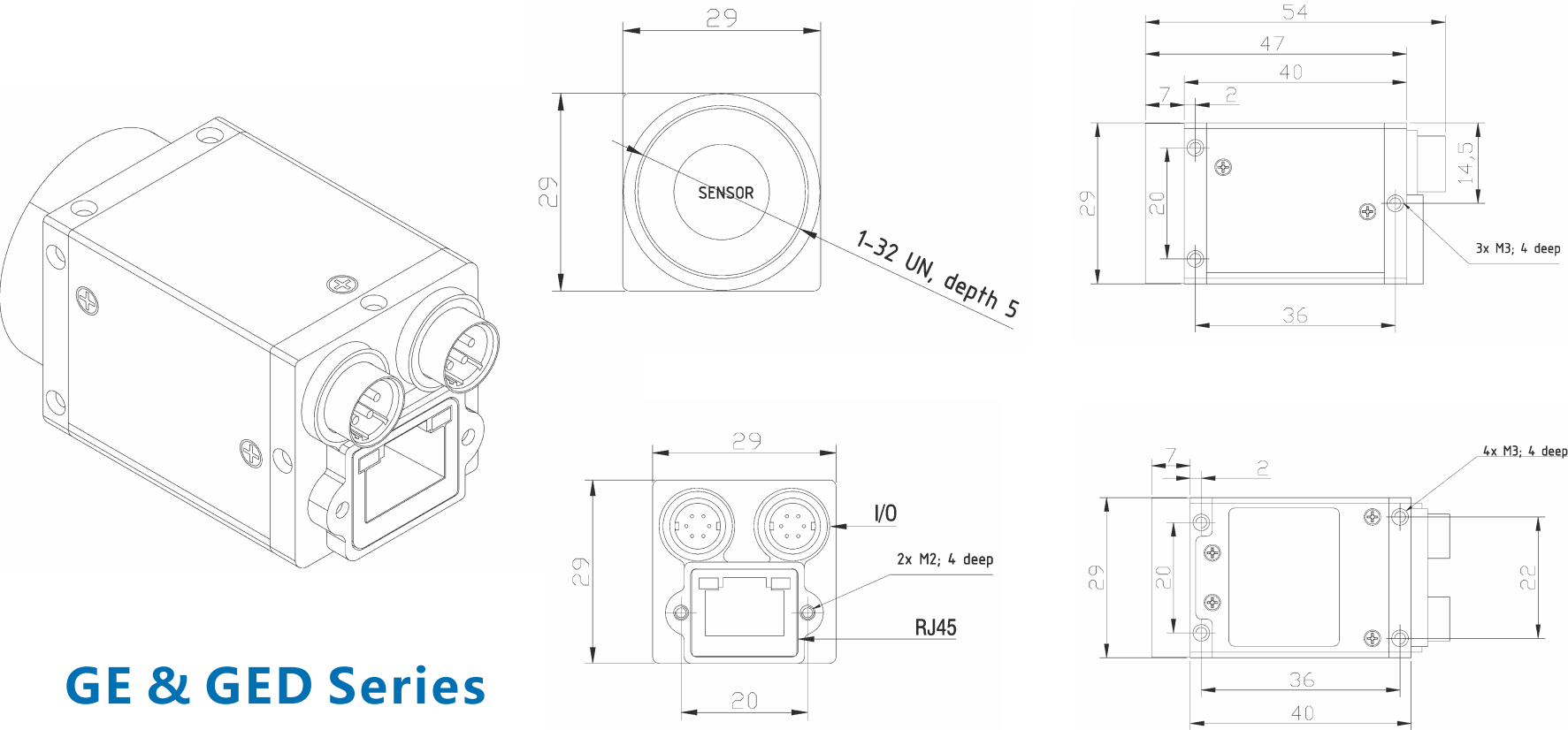
Model Specifications	MV-GE500C
Sensor Type	1/2.5 Inch CMOS
Shutter	Rolling Shutter
Mono/Color	Color
Pixel Size	2.2X2.2μm
Resolution	5MP(2592×1944 )
Frame Rate	2592X1944@15FPS 2048X1536@22FPS 1600X1200@34FPS
Pixel Bit Depth	12bit
Sensitivity	1.76V/lux-s 550nm
I / O port	6-pin Hirose connector, 1-channel optical trigger input (multiplexed as input GPIO), one-way optical flash output (multiplexed as output GPIO); Can be added with 2 input 3 output (double 6pin Hirose connector )
Synchronization	external trigger/software/free-run
Maximum Gain	7.88
Exposure time(ms)	0.033~513
Filter	Standard 650nm Infrared Cut-off Filter
Frame Buffer	32M Bytes
Camera Custom Data	2K Bytes
Video Output Format	Bayer8、Bayer12、Mono8、Mono12、Mono16、RGB24、RGB32、RGB48
Video software interface	GigE Vision V1.2、GenICam
Lens Mount	CS-mount, to provide CS-mount to C-mount adapter ring
Data Interface	Rj45 Gigabit Ethernet interface, backward compatible with 100M network standard
Power Requirements	External 12V power supply, through the network cable POE power supply (need to support the host side)
Power Consumption	<2.5W
Dimensions	29(mm)X29(mm)X40(mm)
weight	68g
Working temperature	0~50℃
Working humidity	20~80% ( No Condensation )
Storage temperature	-30~60℃
Storage humidity	20~95% ( No Condensation )
Support system	WINXP, WIN7 / 8/10 32 & 64-bit systems, Linux and ARM Linux drivers and Android platform drivers (customizable)
Drivers	DirectShow components Halcon special components Labview dedicated drive OCX components TWAIN components
Programming language	C/C++/C#/VB6/VB.NET/Delphi/BCB/Python
Programmable control	Image size (ROI), camera, exposure time, GAMMA, contrast, brightness, custom LUT, mirror flip, RGB color gain, saturation, sharpness, color to mono, color temperature correction, anti-color, Color, trigger mode, frame rate control

SPECTRUM



MECHANICAL SPECIFICATION

Unit : mm



GE & GED Series